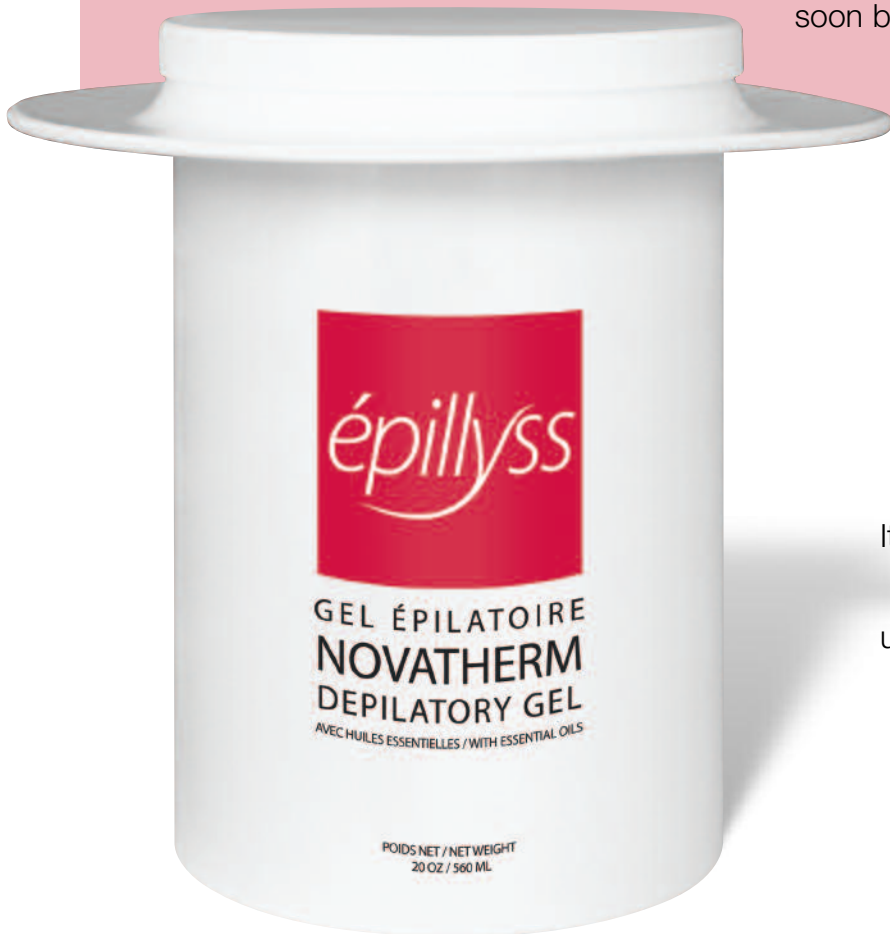


NOVATHERM

VASODILATOR! This depilatory gel is unique! It was created by our own biochemists following a patented discovery, the Biorésine C3 which grants it a vasodilator and protection effect which results in maximum adherence to hairs and lesser traction on the skin! This gel enjoys an exceptional texture and a shiny red colour as a result of the trace-elements that it shelters. The skin will not become sticky and will be less irritated after the hair removal. This product is suitable for all types of skin or hairs and is very popular with young people, and for integral hair removal. It will soon be available for use in the microwave oven.

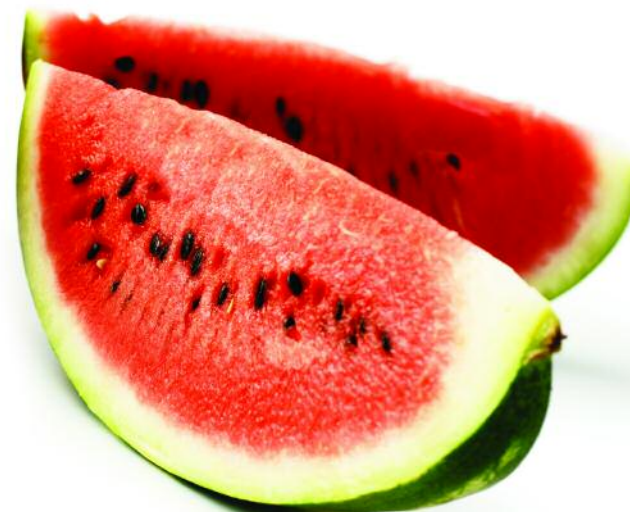


BIORÉSINE

The Biorésine C3 is the successful result of a unique patented process created by ESF's biochemists to decrease the level of oil in the wax, through a triple distillation procedure. Its great fluidity is one of the many exceptional qualities of this product. Its handling at ultra-low temperature is therefore less gummy, less painful and yields higher efficiency.



ADVANCED
DEPILATORY
SOLUTIONS



Wax preparation

1. Remove the hygienic safety seal and fix the collar properly. Same will become handy to receive your spatula during the application of the wax. It will also keep the container clean without any wax overflowing.
2. Use a Solo-Pil or Duo-Pil wax-heaters or similar wax heater at maximum heat (10-15 minutes) until liquid consistency. See Softening Temperature on the container.
3. Set the thermostat lower to maintain the texture liquid – but not too hot for the skin.
4. It is suggested to cover the bolero and reduce the temperature to its minimum while not in use for a long period of time so as to slow down the evaporation of essential oils.

Directions for use

1. Sanitize the area to be treated with the **épillyss** Pre-Depilatory Lotion.
2. Use a spatula to apply a thin and uniform layer of warm wax in the direction of hair growth.
3. Cover this layer of wax with a strip and smooth lightly for better adherence.
4. Use your free hand to withhold the stretched skin and seek your customer's help to hold the taut skin if necessary.
5. Hold one tip of the strip and pull in a very rapid motion in the opposite direction of the hair growth, as close to the skin as possible to avoid bruises.
6. Upon completion of hair-removing, apply aloe post-epilation gel to reduce redness. Smooth softly with an **épillyss** soothing and moisturizing post-depilatory product of your choice.
7. Clean your working area (instruments, table and others) with Zestasol, a 100% natural product.

Warning

Avoid exposure to the sun or sun bed before and/or after any epilation session. The skin sensitivity has been enhanced by the UV-rays and is more subject to burns. If your customer is preparing for a special event, attend at the hair removal the day before. Never practice wax epilation on broken, burnt or irritated skin, on warts, moles, eyelashes, or nipples. Waxing should not be done on people with diabetes or under medication without prior consultation with their doctors. It is possible to see red spots on the skin or feel ticklings following an epilation session. They will disappear after a few hours. The use of the **épillyss aloe gel** will reduce those reactions. For the first epilation, it is suggested to test a small skin area for allergies and to wait ten minutes before pursuing further.

Softening temperature

Celsius: 32° C - **Fahrenheit:** 90° F

Texture: Liquid gel

Ingredients: Colophonium (Purified pine resin), Seed Oil (Grape seed oil)

Special touch: C3 Bioresin, Oligo elements

Essentials oils: Melissa Officinalis (Citronella), Citrus Lanatus (Watermelon)

Suggested application *

Type of skin	Types of hair	Areas
Thick	Average Strong	Complete bikini Facial

** This application is for information purposes as the data and/or comments do apply according to the place, technique and temperature of the wax during the treatment. Our suggestions are based on comments received from our customers and itemized along the years.*

All our waxes are made for all skin areas and all types of hairs.

Suggestions

Daily use of **épillyss Vitamin E** biological cream and of the Renaissance glove will considerably reduce the dryness of the skin and the arrival of ingrown hairs. For ingrown hair areas, it is highly recommended to use the Renaissance glove while bathing or under the shower, one hour before receiving the treatment. Maximize the result of your treatment by using the **épillyss post-epilation gel or serum** by electro-deposition (galvanic machine) after in-cabin treatments and by recommending it for use at home subsequently. In addition, the **épillyss PFB Vanish** is excellent to reduce ingrown hairs.